

RFH-4 with Quick-Change Element Bowls

The backflushing high pressure RFH-4 filter/strainer with quick change element bowls is an easy-to-operate backflushing filter/strainer for water-based fluids at operating pressures of up to 5076 psi (350 bar). The new quick change bowl design significantly decreases the amount of time needed to change out elements utilizing a locking bayonet mount and securing the bowls with a locking pin.

Introduction

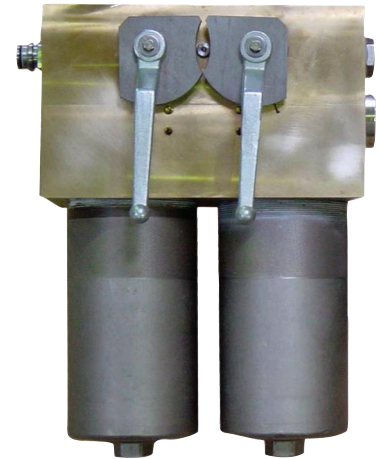
The main application of this filter/strainer is to protect shield hydraulics in mining. However, other applications are possible, such as, in the rotary valve hydraulics of storage hydro-stations, paint filtration or the protection of high pressure nozzles. The backflushing is carried out manually using switch levers, hydraulically or electro-hydraulically. The RFH-4 is a robust filter/strainer materials in stainless steel options, slotted tube or multi-layered wire mesh with the advantage or easy service in confined spaces.

Features

- Quick-change, bayonet style bowl attachment for easy service in confined spaces
- Rugged design for mining
- Large process connections and filter cross section provide a lower pressure drop
- Easy operation of backflush valves proven in mine applications in the USA and Europe
- Optimized design of the actuator reduces the wear found in competitive designs maximizing filter reliability

Technical Information

Operating Pressure:	5076 psi (350 bar)
Control Options:	Manual \ Hydraulic \ Electrohydraulic
Materials:	Stainless Steel, Brass
Inlet / Outlet Connection:	Steck-O DN50
Backflush Connection:	Steck-O DN19
Control Pressure Connction:	Steck-O DN10
Weight:	210 lbs. (95 kg) -Stainless Steel 247 lbs. (112 kg) -Brass
Flow Rate:	211 gpm (900 L/min)
Filtration Area:	170 in ² (1094 cm ²)
Available Micron Ratings:	50, 100, 200 & 500 -Slotted Tube 25,40 & 60 -Wire Mesh



RFH-4

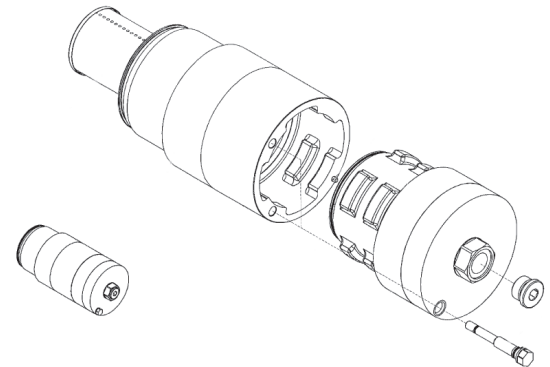


Image of bayonet mount bowl.