

Applications



POINT OF USE FUEL DISPENSING



FLEET FILL / BULK FUEL TRANSFER



BULK FUEL UNLOADING



PROTECTION FOR HIGH-FLOW FUEL INJECTION SYSTEMS



BULK TANK KIDNEY LOOP / RECIRCULATION

Features and Benefits

- Fuel dispensing and transfer filtration solution with choice of integral or blocked bypass to suit application
- Allows users to achieve or exceed the manufacturer requirements for particulate and water content in diesel fuel
- Designed with integrated particulate removal pre-filtration for downstream coalescing filter protection and extended element life
- Routine element change only needed on particulate pre-filter, which saves time and money
- Updated BDF design incorporates GHPF and GHCF filter housings for a reduced cost, improved function, and increased capacity
- Patented GeoSeal® element sealing interface ensures quality element replacement
- Particulate filtration available at 1 or 3 microns utilizing synthetic Z-Media® element for better contamination control
- Patented, three-phase, particulate and fuel/water separation media technology
- Housing design allows for field upgrade of any available option
- Complete automation is achievable with a water and fuel sensor and fail-safe auto-drain feature using a remote 5 gallons (18L) or 20 gallons (75L) sump with alarm and auto shutdown in application >32°F (0°C)
- Easy mounting and element service



Model no. of filter in photograph is: BDF111GGZ3CG5VD5



Model no. of filter in photograph is: BDF211GGZ3CG5VD5

Markets



INDUSTRIAL



MOBILE VEHICLES



MARINE



MINING TECHNOLOGY



AGRICULTURE



POWER GENERATION



COMMON RAIL INJECTOR SYSTEMS



FLEET



RAILROAD



BULK FUEL FILTRATION

25-50 gpm ICF

95-189 L/min BDF

150 psi BDFA

10 bar BDA

BDA

GHPF

GHCFD

QCF

BDS

BDS2

BDS3

BDS4

LVH-F

LVH-C

BDFC

BDFP

BDC

HDP

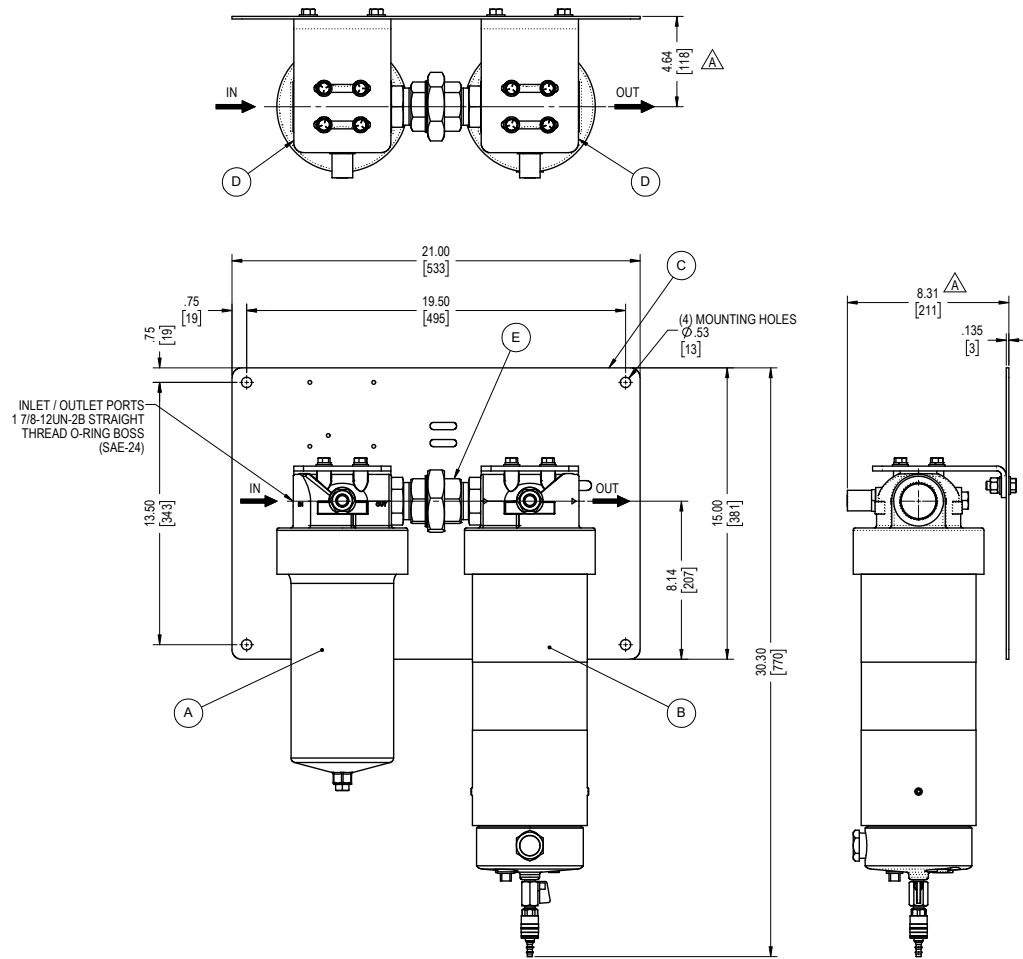
HDPD

BCC

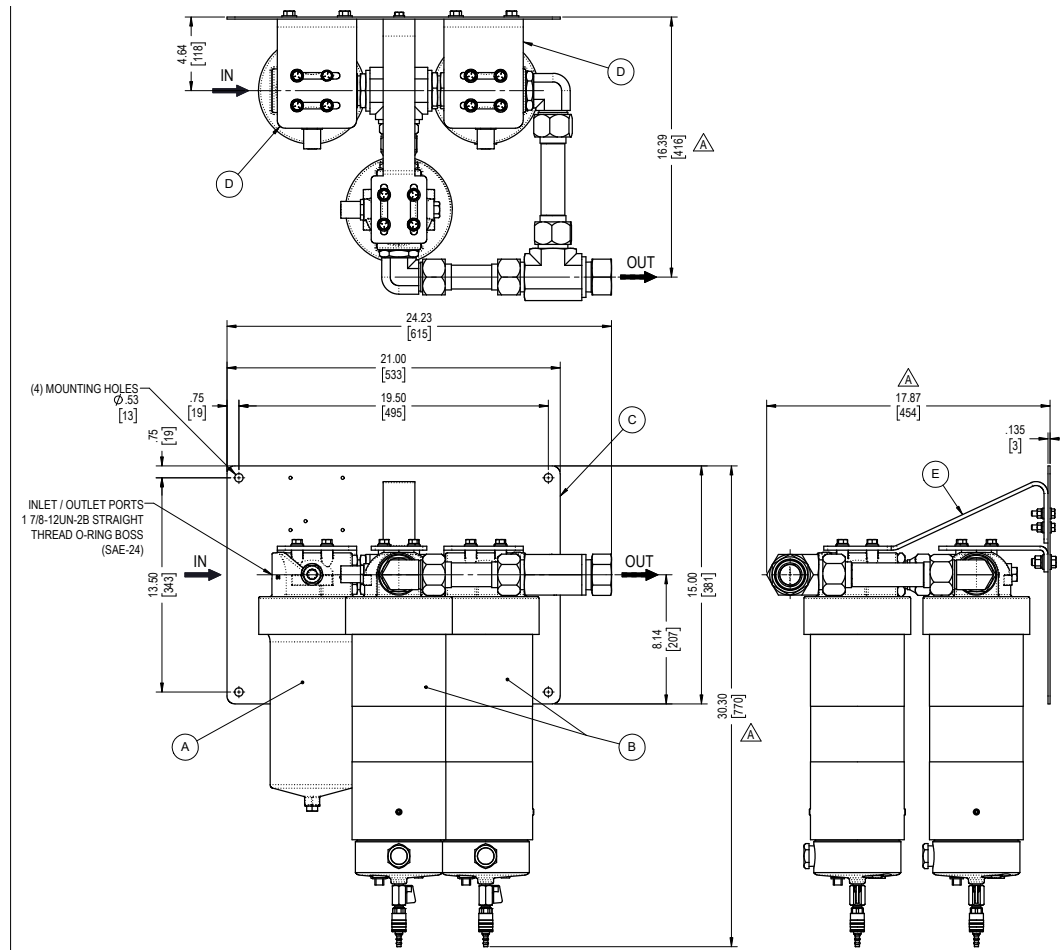
Filter Housing Specifications

Flow Rating:	BDF1: up to 25 gpm (95 L/min) BDF2: up to 50 gpm (189 L/min)	
Inlet/Outlet Connection:	-24 (ORB) SAE J1926	
Max. Operating Pressure:	150 psi (10 bar)	
Temp. Range:	-20°F to 225°F (-29°C to 107°C) w/ optional water sump heater, 32°F to 225°F (0°C to 107°C) without heater, with standard features and AWD options	
Bypass Indication:	Particulate Filter 35 psi (2.4 bar)	Coalescing Filter 35 psi (2.4 bar)
Bypass Valve Cracking:	Particulate Filter 40 psi (2.8 bar)	Coalescing Filter 40 psi (2.8 bar)
Materials of Construction:	Particulate & Coalescing Filter Porting Head: Cast Aluminum, Anodized Element Case: Aluminum, Anodized	Coalescing Filter Only Sump: Cast Aluminum, Anodized
Weight:	BDF1: 46.5 lbs	BDF2: 89 lbs
Element Change Clearance:	Particulate Filter 2" (51 mm)	Coalescing Filter 4.5" (114 mm)
Opt. Water Sump Heater:	120VAC, 1 x 74W (BDF1) / 2 x 74W (BDF2)	
Opt. Visual Electrical Indicator:	120VAC	

BDF1



Metric dimensions in ().
Dimensions shown are inches [millimeters] for general information and overall envelope size only.
For complete dimensions please contact Schroeder Industries to request a certified print.



Metric dimensions in (.).
 Dimensions shown are inches [millimeters] for general information and overall envelope size only.
 For complete dimensions please contact Schroeder Industries to request a certified print.

Filtration Ratio per ISO 16889 Using APC calibrated per ISO 11171

Particulate Elements	DHC(g)	$\beta_x (c) \geq 200$	$\beta_x (c) \geq 1000$
11GGZ1V	172	<4.0	4.2
11GGZ3V	148	<4.0	4.8

Coalescing Element	Pressure Side Coalescing	
	Max Flow	Single Pass Water Removal Efficiency
C125GZ5V	25 gpm	$\geq 95\%$

Note:
 Based on ULSD15 with 27 Dynes/cm surface tension and 0.25% (2500 ppm) water injection

Particulate Element
Flow Direction: Outside In
Element Nominal Dimensions: 5.0" (27 mm) O.D. x 11" (279 mm) long

Coalescing Element
Flow Direction: Inside Out
Element Nominal Dimensions: 5.0" (27 mm) O.D. x 12" (305 mm) long

- BDF2
- ICF
- BDF**
- BDFA
- BDA
- GHPF
- GHCDF
- QCF
- BDS
- BDS2
- BDS3
- BDS4
- LVH-F
- LVH-C
- BDFC
- BDFP
- BDC
- HDP
- DPD
- BCC

Element Particulate Performance Information

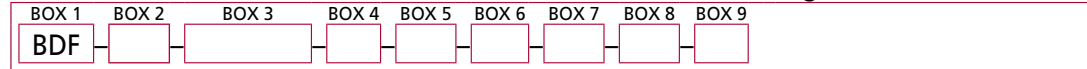
Element Water Coalescing Performance Information

Particulate and Coalescing Elements Sold with System

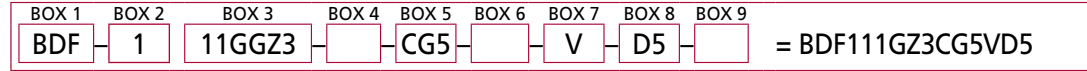
Highlighted product eligible for **QuickDelivery**

Filter Model Number Selection

How to Build a Valid Model Number for a Schroeder BDF housing without element:



Example: *NOTE:*



BOX 1	BOX 2	BOX 3	BOX 4	BOX 5
Filter Series	Flow Rate	Particulate Filtration	Particulate Bypass	Coalescing Filtration
BDF	1 = 25 gpm 2 = 50 gpm	11GGZ1 = 1 μm 11GGZ3 = 3 μm	Omit = 40 psi X = Blocked Bypass	CG5 = C125GZ5V Coalescing Element

BOX 6	BOX 7	BOX 8	BOX 9
Coalescing Bypass	Seal Material	Indicators	Options
Omit = 40 psi X = Blocked Bypass	V = Viton®	D5 = Visual Pop-up, Manual Reset	Omit = Included Sight Glass and Manual Water Drain Valves U = Downstream Test Point T = Water-In-Fuel (WIF) Sensor Only I = WIF Sensor w/ Remote Mount Light Indicator H = Coalescing Sump Heater S5 = 5 gal. Remote Tank S20 = 20 gal. Remote Tank AWD5 = Auto. Water Drain w/ 5 gal. Remote Tank AWD20 = Auto. Water Drain w/ 20 gal. Remote Tank

Element Part Number Selection

Highlighted product eligible for **QuickDelivery**

Filtration Ratio per ISO 16889

Using APC calibrated per ISO 11171

Particulate Elements	DHC(g)	$\beta_x (c) \geq 200$	$\beta_x (c) \geq 1000$
11GGZ1V	172	<4.0	4.2
11GGZ3V	148	<4.0	4.8

Coalescing Element	Pressure Side Coalescing	
	Max Flow	Single Pass Water Removal Efficiency
C125GZ5V	25 gpm	≥ 95%

Note:

Based on ULSD15 with 27 Dynes/cm surface tension and 0.25% (2500) water injection

Particulate Element

Flow Direction: Outside In
 Element Nominal Dimensions: 5.0" (27 mm) O.D. x 11" (279 mm) long

Coalescing Element

Flow Direction: Inside Out
 Element Nominal Dimensions: 5.0" (27 mm) O.D. x 12" (305 mm) long

Fuel Oils

- ULSD15, low sulfur diesel and high sulfur diesel
- Biodiesel blends
- Synthetic diesel and blends
- No. 2 fuel oil and heating oil

Fluid Compatibility