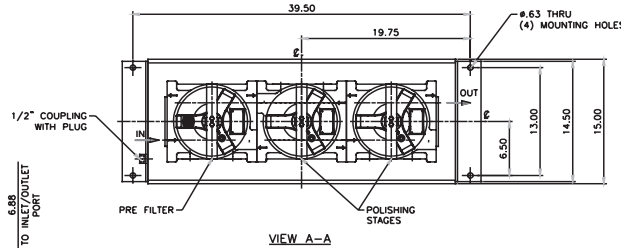


BOX 1 MODEL CODE	BOX 2 SEALS	BOX 3 INLET PORTING	BOX 4 OUTLET PORTING	BOX 5 STAGE 1 INDICATOR	BOX 6 TEST POINTS
BCC300	V=VITON	P24=1 1/2" NPT P32=2" NPT P32=2" SAE 4-BOLT FLANGE CODE 61	P24=1 1/2" NPT P32=2" NPT P32=2" SAE 4-BOLT FLANGE CODE 61	OMIT=NONE D5=VISUAL POP-UP D5C=VISUAL POP-UP IN CAP DPG=DIFFERENTIAL PRESSURE GAUGE MS10=ELECTRICAL W/DIN CONNECTOR (MALE END ONLY)	OMIT=NONE UU=TEST POINTS IN EACH STAGE

STAGE	PART NUMBER	QTY.
1	BCC390PRE	1
2	BCC390POL	1
3	BCC390POL	1



- NOTES:
- COATING:
INTERNAL: NONE
EXTERNAL: STAGE 1 - IRON GREEN
S.I. SPEC. #144, 145, 146
STAGE 2 - IRON BLACK
S.I. SPEC. TBD
 - HOUSING WILL ACCOMMODATE CARTRIDGE PER REPLACEMENT CHART.
 - ESTIMATED EMPTY WEIGHT: TBD

ALL DIMENSIONS SHOWN MAY CHANGE PENDING FINAL DESIGN. ALL DIMENSIONS SHOWN MUST BE HELD WITHIN A CERTAIN TOLERANCE. PLEASE REFER TO SCHROEDER INDUSTRIES LLC FOR APPROVAL.

How to Build a Valid Model Number for a Schroeder BCC300:



Example: NOTE: One option per box



BOX 1	BOX 2	BOX 3	BOX 4
Filter Series	Seals	Inlet Porting	Outlet Porting
BCC300	V = Viton®	P24 = 1 1/2" NPT P32 = 2" NPT F32 = SAE 4-bolt flange code 61	P24 = 1 1/2" NPT P32 = 2" NPT F32 = SAE 4-bolt flange code 61

BOX 5
Dirt Alarm®
Omit = None D5 = Visual Pop-up D5C = Visual Pop-up in cap DPG = Differential Pressure Gage MS10 = Electrical w/ DIN connector (male end only)

BOX 6
Test Points
Omit = None UU = Test Points in all housings

NOTES:

Box 2. Viton® is a registered trademark of DuPont Dow Elastomers

Stage 1 Cartridge:	BCC390PRE
Stage 2 & 3 Cartridges:	BCC390POL

Filter Model Number Selection

- ICF
- BDF
- BDFA
- BDA
- QCF
- BDS
- BDS2
- BDS3
- BDS4
- LVH-F
- LVH-C
- BDFC
- BDC
- HDP
- HDPD
- EPM
- EPTT
- EWU

BCC

Replacement Cartridges